

淡き光に

(A Media Luz)

Lyrics by Carlos Cesar Lenzi

Music by Edgardo Donato

♩ = 56

[A]

Dm

Gm

A7

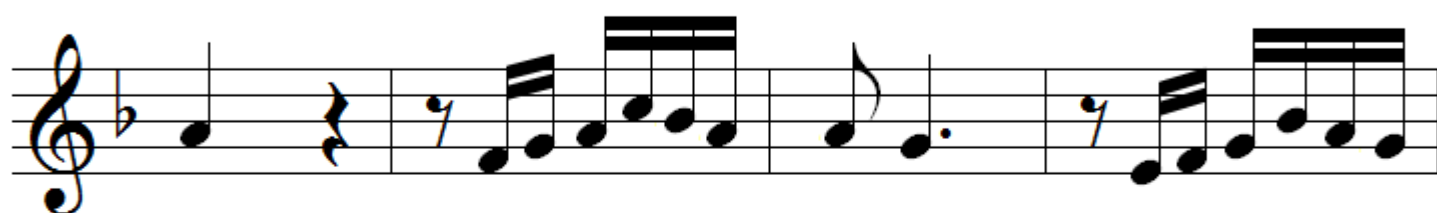


Dm

Dm

A7

A7



Dm

Dm

A7



A7

Dm

D7



Gm

A7

Dm



Londo Station

Dm A7 Dm A7

The first staff of music is in G minor (one flat). It begins with a 7-measure rest. The melody consists of eighth and sixteenth notes. The first measure of the melody is marked with a blue '7'. The staff ends with a double sharp on the second line (F#) and a blue sharp on the first line (D#).

[B]

D D A7

The second staff continues the melody in G minor. It features a double bar line in the second measure. The melody is marked with blue sharps on the first line (D#) and second line (E#) in the third measure.

A7 D D

The third staff changes key signature to D major (two sharps). The melody continues with eighth and sixteenth notes.

A7 A7 D

The fourth staff continues the melody in D major. It ends with a double bar line.